

MANUFACTURERS AND LOGOS

ABOUT OUR FINDS

- Sudbourne Hall in East Suffolk was requisitioned as the headquarters of the Orford Battle Area from 1942 to 1946. This was where men were trained for landing in France.
- A buried dump near the now demolished building contained white undecorated pottery marked with a manufacturer's name and '1942'. Two other marks were 'G vi R' and 'W' within a lozenge. There were only two forms: an 10-inch dished plate and 3 3/4-inch mug 4 1/4 inches high.
- The number of potteries which supplied identical forms surprised us and we would love to know more.
 - [Zuki & Tatum Fenwick-Paaul](#)

POUNTNEY'S



1942

G.V.R.
1942
POUNTNEY & CO LTD
BRISTOL

cm

1

2

3

4

5

6

7

8

9

10

11

12

13

14

15

16

SUD PK '14
site 001

6

8

2

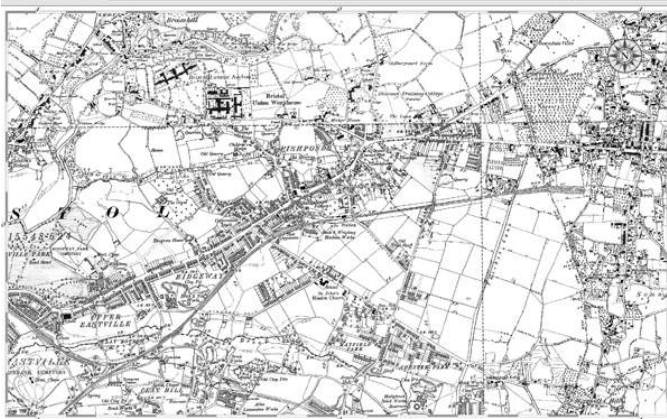
9

By R.
1942
MOUNTNEY & CO LTD
BRISTOL

cm 1 2 3 4 5 6 7 8 9 10
SUD PK '14
site 001
6 8

POUTNEY & CO LTD. BRISTOL

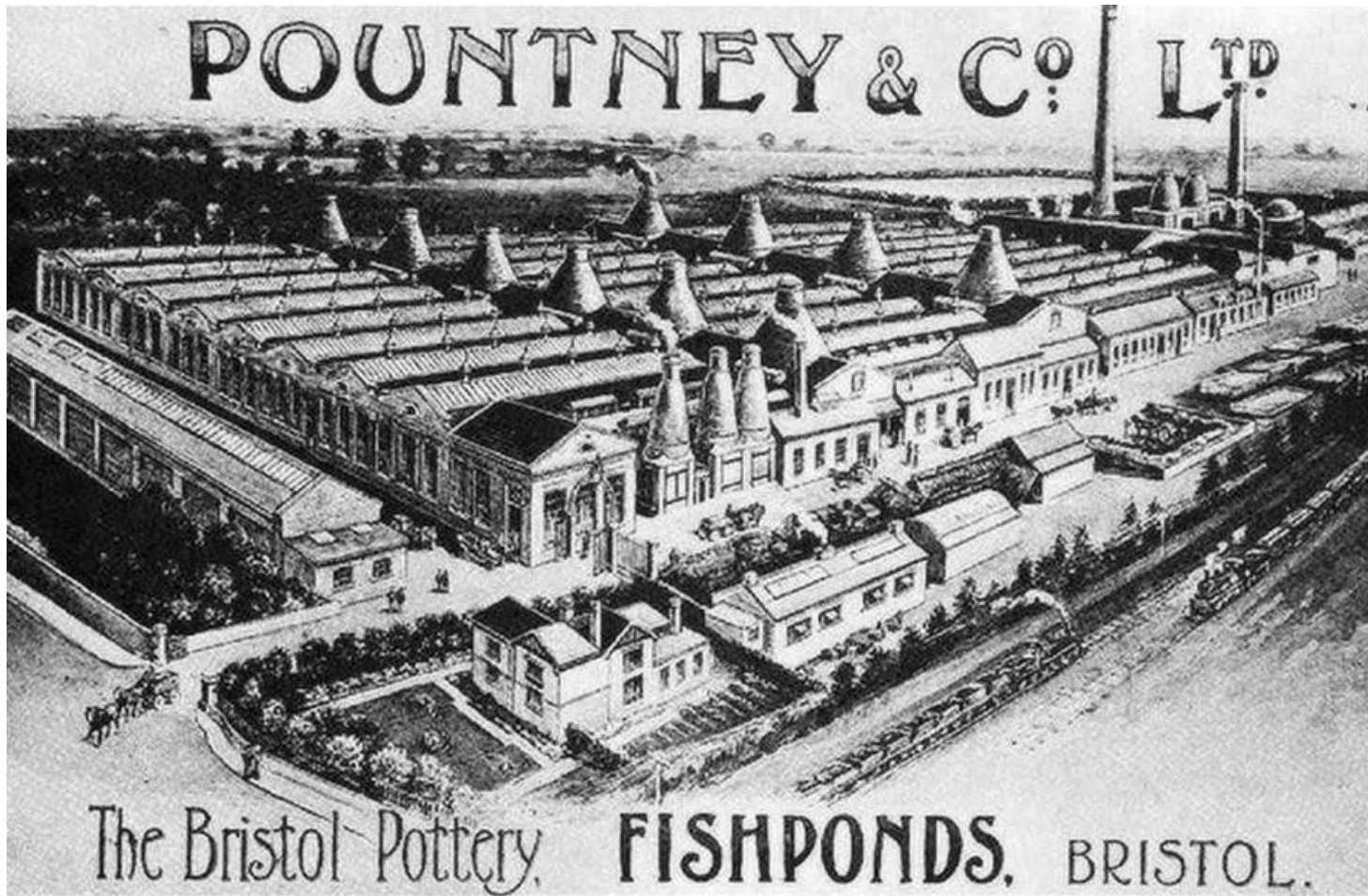
- Poutney & Co LTD. moved to the south-east area of Bristol, called Fishponds, in 1905.



This map dates from around 1881 and 1902

- They then opened a large factory on Lodge Causeway.

POUNTNEY & CO LTD. BRISTOL



POUTNEY & CO LTD. BRISTOL

- Poutney & Co LTD. produced a range of domestic products and luxury ceramics, which were exported across the world.
- They went bankrupt in 1971



G. VI R.
DOULTON & CO LTD
1942

SUB PK '14
site 001

DOULTON & CO LTD.

- Doulton & Co LTD. made stonewares and earthenwares at Lambeth, London, c.1854-1956.
- It produced decorative stoneware in association with Lambeth School of Art, and became very successful at many international exhibitions.
- It continued to produce pottery throughout WWII, but one source says that this was for export only, even though we found pottery at our site.

CRESCENT
& SONS
GEORGE JONES & SONS
MADE IN ENGLAND



1942.

SUD PK '14
site 001

CRESCENT & SONS

GEORGE JONES & SONS ENGLAND

- This company started operation c.1864, under the name of George Jones.
- In 1873 they became George Jones & Sons LTD.
- They worked The Trent Potteries in Stoke-Upon-Trent.
- In c.1907 they were re-named Crescent Potteries.

G.V.L.
SWINHERTON
1942

SUD PK '14
site 001

SWINNERTON

- Swinnertons LTD. was founded c.1906.
- It owned factories in Henley.

G. & R.
GRINDLEY
1942

SUB PK '14
site 001

GRINDLEY

- WH Grindley was founded in 1880 by William Harry Grindley of Tunstall, Stoke-On-Trent.

TUNSTALL, _____ &S _____ CE&CO
LTD.

- (We found this hard to read, but above is what we have deciphered so far!)

NORTH STAFF
POSTER
GLOBE
CORRIDOR

SUD PK '14
site 001

6

NORTH STAFFORDSHIRE POTTERIES

GLOBE POTTERY COBRIDGE

- It was established in 1914, on Waterloo Rd in Cobridge.

G. VI P
MYO
SON

cm

1

2

3

4

5

6

7

8

9

10

SUD PK '14
site 001

6

MYOTT SON & CO

ALEXANDER POTTERIES COBRIDGE

- Myott Son & Co was established in 1898 by Ashley Myott.
- Ashley Myott worked with his brother, Sydney, to work the Alexander Pottery, Wolfe Street, Stoke.
- They expanded in 1925 to include a next-door pottery.

MYOTT SON & CO ALEXANDER POTTERIES COBRIDGE



This is image of
their factory in
the 1930s.

MYOTT SON & CO ALEXANDER POTTERIES COBRIDGE



Only the gates
remain today.

THANK YOU!

**PLEASE GET IN TOUCH IF YOU
KNOW ANY MORE ABOUT THE
POTTERIES DURING WORLD WAR II,
OR HOW CATERING AND DOMESTIC
EQUIPMENT WAS ORGANISED.**

Zuki Fenwick-Paul

RESOURCES

- <http://www.thepotteries.org/>